

AURUM CANTUS

The Sound of Seduction

Aurum Cantus

World-Class Loudspeakers

Aurum Cantus started manufacturing and designing speaker systems, ribbon tweeters and driver units in Milan Italy in 1980's. For the first 10 years the company was involved in designing and manufacturing speaker systems for OEM hi-end European speaker brands. In 1994 they joined in partnership with Jinlang Audio Company Ltd and released the first marketed Aurum Cantus models to the European and USA markets. Aurum Cantus is now exported to over 30 Countries.

Jinlang Audio Company is a highly respected speaker manufacturer that has been manufacturing world famous speaker brands from Europe and USA as OEM products.

Over the years, millions of dollars have been invested into the manufacturing plant with the latest state of the art machinery from Italy and Germany for cabinetry and sound testing laboratory equipment. About 90% of manufacturing is now performed here and new product research and development is done in Milan.

All manufacturing is done in house including ribbon tweeters and driver units. Many other speaker manufacturers are now using Aurum Cantus driver units and ribbon tweeters in there speakers.

All driver units are constructed from hi-tech non woven carbon fiber and Kevlar® in a patented sandwich design. Driver units use oversized voice coils for high power handling and controlled dynamics.



Intricate crossover designs are used with Mundorf music caps from Germany and Supra internal wiring from Sweden. Military spec resistors are included for the highest tolerances.



All gloss finished speakers have 14 coats of piano lacquer and are hand polished to a mirror finish. The cabinet construction teams are trained in Italy by master craftsmen to produce exquisite furniture grade cabinets that rival the best in the world.

Aurum Cantus is a leader in ribbon tweeter technology and one of the world's largest ribbon driver manufacturers. They produce more than 20,000 sets of ribbon tweeters annually for their own Aurum Cantus branded speakers, as well as other OEM brands across the globe.

To ensure quality, Aurum Cantus ribbon tweeters are meticulously handcrafted. The delicateness of the hair-thin aluminum diaphragm makes automated production impossible

With this attention to detail in all aspects of manufacturing, technology and sound quality, it's no wonder Aurum Cantus have received many international awards and favoring reviews across the globe.



Ribbon Loudspeakers

The Sound of Seduction

The physics behind ribbon speakers



Fundamental physics explains why the ribbon is the perfect type of transducer. Instead of using a cone attached to a voice coil suspended in a magnetic field, a ribbon driver uses a strip of aluminum foil ribbon as a diaphragm. It is suspended between the opposite poles of two magnets. As the signal current passes through the electrically conductive ribbon, it interacts with the magnetic fields. This causes the ribbon to move back and forth, creating sound.

The ribbon serves both as voice coil and diaphragm. Every part of the ribbon is driven directly and simultaneously without any energy loss. At very high frequencies the ribbon radiates horizontally but not vertically. In the listening room one hears more direct sound from the loudspeaker and less reflection from the sidewalls and ceiling.

Reduced wall reflections aid in sound staging. Pinpoint imaging and the ability to project a concert hall's acoustic signature are hallmarks of good ribbon loudspeakers.

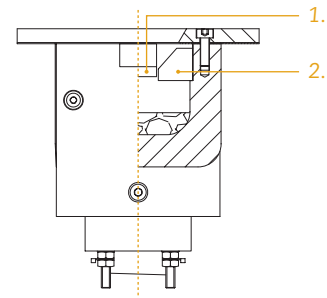
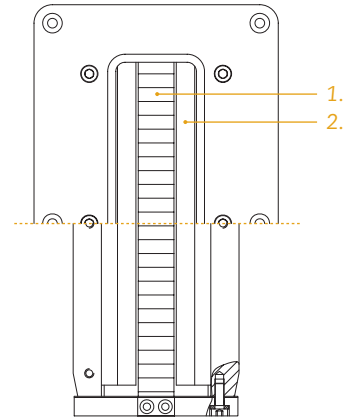
Advantages over conventional speakers

A ribbon tweeter has notably less mass. It may have one quarter the mass, but ten times the radiating area of a dome tweeter's diaphragm. With its low mass over area ratio, ribbon drivers respond faster to input signals. This ability to instantly accelerate or decelerate allows them to reproduce transient musical information accurately.

Ribbon loudspeakers are characterized by their remarkable ability to produce extremely clean and quick transients, such as those of plucked acoustic guitar strings or percussion instruments. The sound seems to start and stop suddenly, identical to the sound generated by live instruments. The sound also has an openness, clarity, and transparency often unmatched by conventional loudspeakers.

Another advantage resulting from the low mass to surface area ratio is the ability to accurately reproduce high frequencies. Conventional loudspeakers normally max out at 20kHz. It is harder to keep mass under control as frequency increases – and cone drivers are by design heavier than ribbon diaphragms. For example, it would be possible to bring a cannon ball to 20kHz, but you might need a power source the size of a boat to drive it.

In comparison, the Aurum Cantus G2 tweeter can reach 40kHz with just a few watts of amplification. The high frequency range is where the lifeblood of most music resides. This is where sounds are the most delicate. This is where the key emotion of a piece does its seduction. Ribbon loudspeakers generally form a better emotional link with the listener given their excellent performance at high frequencies.



1. Aluminium ribbon diaphragm
2. Rare Earth/Neodymium ferrite-boron magnets

Top: Section view from front
Bottom: Section view from above

Supreme Series

Flagship Collection

Design

Frequency Response

Sensitivity

Impedance

Power Range

Tweeter

Midrange

Woofers

Terminals

Finish

Dimensions (H×W×D)

Net Weight

Supreme

Floorstander

3-way ported (rear)

32Hz-40kHz

90dB/W/m

4 ohms (minimum 4 ohms/3kHz)

50-350W recommended

G1 aluminium ribbon

130mm (5.2") × 2

254mm (10") × 2

4 × 18mm gold-plated binding post, bi-wiring design

Custom made from a choice on the finishes page.

1412mm × 306mm × 430mm

79kg/pc



Harmony

Floorstander

3-way ported (rear)

30Hz-40kHz

91dB/W/m

4 ohms

50-250W recommended

G1 aluminium ribbon

165mm (6.5")

200mm (8") × 2

4 × 18mm gold-plated binding post, bi-wiring design

Gloss Rosewood
Gloss Cherrywood
Gloss Ball Shaped Sapele
Special order finishes available.

1200mm × 293mm × 460mm

60kg/pc



Volla

Reference Monitor

2-way ported (rear)

38Hz-40kHz

88dB/W/m

8 ohms (minimum 6.4 ohms)

50-200W recommended

G1 aluminium ribbon

165mm (6.5")

—

4 × 18mm gold-plated binding post, bi-wiring design

Custom made from a choice on the finishes page.

460mm × 245mm × 385mm

21kg/pc



Rhythm

Centre

2-way ported (side)

45Hz-40kHz

90dB/W/m

4 ohms (minimum 3.2 ohms)

50-150W recommended

G1 aluminium ribbon

165mm (6.5")

—

2 × 18mm gold-plated binding post

Gloss Rosewood
Gloss Cherrywood
Gloss Ball Shaped Sapele
Special order finishes available.

246mm × 680mm × 390mm

28.2kg



The Supreme series offers a no compromise reference loudspeaker range for the discerning audiophile.

Seductively musical with a classical elegance.

V Series

Audiophile Collection

Design

Frequency Response

Sensitivity

Impedance

Power Range

Tweeter

Midrange

Woofers

Terminals

Finish

Dimensions (H×W×D)

Net Weight

V8F

Floorstander

3-way ported (rear)

35Hz-40kHz

88dB (2.83V/1m)

8 ohms (minimum 6.4 ohms)

50-250W recommended

G1 aluminium ribbon

165mm (6.5")

200mm (8")

4 × 18mm gold-plated copper connectors, bi-wiring design

Gloss Cherrywood

Gloss Rosewood

1100mm × 352mm × 462mm

53kg/pc



V6F

Floorstander

2.5-way ported (rear)

38Hz-40kHz

88dB (2.83V/1m)

4 ohms (minimum 3.2 ohms)

50-200W recommended

G3N aluminium ribbon

165mm (6.5")

165mm (6.5")

4 × 18mm gold-plated copper connectors, bi-wiring design

Gloss Cherrywood

Gloss Rosewood

1050mm × 316mm × 432mm

39kg/pc



V3M

Bookshelf

2-way ported (rear)

45Hz-40kHz

88dB (2.83V/1m)

8 ohms (minimum 6.4 ohms)

50-200W recommended

G3N aluminium ribbon

165mm (6.5")

-

4 × 18mm gold-plated copper connectors, bi-wiring design

Gloss Cherrywood

Gloss Rosewood

410mm × 225mm × 370mm

16kg/pc



V2M

Bookshelf

2-way ported (rear)

50Hz-40kHz

87dB (2.83V/1m)

8 ohms (minimum 6.4 ohms)

50-200W recommended

G2N aluminium ribbon

130mm (5.2")

-

2 × 18mm gold-plated copper connectors

Gloss Cherrywood

Gloss Rosewood

370mm × 205mm × 320mm

12.8kg/pc



V4C

Centre

2-way ported (rear)

50Hz-40kHz

90dB (2.83V/1m)

4 ohms (minimum 3.2 ohms)

50-150W recommended

G3N aluminium ribbon

165mm (6.5")

-

2 × 18mm gold-plated copper connectors

Gloss Cherrywood

Gloss Rosewood

218mm × 540mm × 337mm

21kg/pc



Design

Frequency Response

Sensitivity

Impedance

Power Range

Tweeter

Midrange

Woofers

Terminals

Finish

Dimensions (H×W×D)

Net Weight

The V series incorporates many of the driver and crossover technologies previously reserved for the Supreme series, creating superlative hi-end performance on an accessible level.

Melody Series

Premium Hi-Fi and Home Theatre Collection

Design
 Frequency Response
 Sensitivity
 Impedance
 Power Range
 Tweeter
 Midrange
 Woofer
 Terminals
 Finish
 Dimensions (H×W×D)
 Net Weight

M 102

Floorstander



3-way ported (rear)
 32Hz-40kHz
 90dB/W/m
 8 ohms (minimum 6.4 ohms)
 50-200W recommended
 G3i aluminium ribbon
 120mm (4.8")
 200mm (8")
 4 × 18mm gold-plated copper connectors, bi-wiring design
 Matt Cherrywood
 Matt Rosewood
 1100mm × 254mm × 352mm
 38.5kg/pc

M 103

Floorstander



2-way ported (rear)
 35Hz-40kHz
 89dB/W/m
 8 ohms (minimum 6.4 ohms)
 50-200W recommended
 G3i aluminium ribbon
 180mm (7")
 –
 4 × 18mm gold-plated copper connectors, bi-wiring design
 Matt Cherrywood
 Matt Rosewood
 1025mm × 220mm × 273mm
 22kg/pc

M 103S

Bookshelf



2-way ported (front)
 40Hz-40kHz
 88dB (2.83V/1m)
 8 ohms (minimum 6.4 ohms)
 50-200W recommended
 G3i aluminium ribbon
 –
 180mm (7")
 2 × 18mm gold-plated copper connectors
 Matt Cherrywood
 Matt Rosewood
 450mm × 220mm × 355mm
 13.6kg/pc

Design
 Frequency Response
 Sensitivity
 Impedance
 Power Range
 Tweeter
 Midrange
 Woofer
 Terminals
 Finish
 Dimensions (H×W×D)
 Net Weight

M-MC

Centre



2-way ported (rear)
 48Hz-40kHz
 90dB/W/m
 4 ohms (minimum 3.2 ohms)
 50-150W recommended
 G3i aluminium ribbon
 165mm (6.5")
 –
 2 × 18mm gold-plated copper connectors
 Matt Cherrywood
 Matt Rosewood
 224mm × 600mm × 375mm
 20.5kg

SW-10

Subwoofer



Active subwoofer (rear port)
 40Hz-160Hz (adjustable)
 Average: 96dB(25Hz—62Hz),
 Maximum: 106dB(55Hz)
 –
 200W undistorted
 –
 254mm (10") Nomex
 –
 Matt Cherrywood
 Matt Rosewood
 Black Piano Gloss
 458mm × 335mm × 500mm
 30kg

M-DS

Surround



2-way sealed cabinet
 70Hz-40kHz
 90dB (2.83V/1m)
 8 ohms (minimum 6.4 ohms)
 50-150W recommended
 G2i aluminium ribbon
 –
 130mm (5.2") × 2
 2 × gold-plated copper connectors
 Matt Cherrywood
 Matt Rosewood
 350mm × 450mm × 190mm
 12.2kg/pc

F Series

Performance Collection

Design

Frequency Response

Sensitivity

Impedance

Power Range

Tweeter

Midrange

Woofers

Terminals

Finish

Dimensions (H×W×D)

Net Weight

F-5508

Floorstander

3-way

42Hz-20kHz

90dB/W/m

4 ohms

50-200W

1"

2 × 5.2"

8"

4 × gold-plated binding post

Cherrywood PVC

1034mm × 200mm × 315mm

23kg/pc



F-5000C

Centre

2-way

60Hz-20kHz

89dB/W/m

4 ohms

50-120W

1" (Shielded)

2 × 5.2" (Shielded)

-

2 × gold-plated binding post

Cherrywood PVC

193mm × 543mm × 255mm

8kg/pc



F-5000R

Bookshelf

2-way

60Hz-20kHz

89dB/W/m

8 ohms

50-100W

1"

5.2"

-

2 × gold-plated binding post

Cherrywood PVC

363mm × 193mm × 255mm

5kg/pc

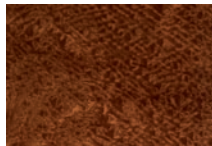


Finishes

Beautifully Crafted to Compliment Your Lifestyle



Walnut



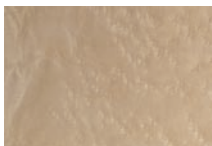
Ball Shaped Sapele



Rosewood



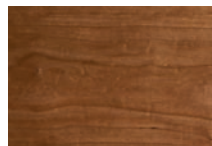
Black Piano Gloss



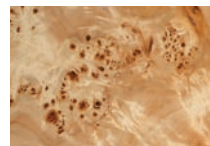
Birds Eye Maple



Reflective Maple



Cherrywood



Poplar Burl

Awards

From Those Who Know



Audio & Video
Lifestyle
Best Buy Awards
2006



Audio & Video
Lifestyle
'Editor's Choice'
Product of the
Year 2006



Hi-Fi Choice
Best Buy Award

Harmony

Serial Number: _____
Rated Impedance: 4ohms
Rated Power: 250W
Sensitivity: 91dB/W/m
Frequency response: 30Hz - 40kHz

Aurum Cantus Audio Co., Ltd.



Distributed in Australia and New Zealand by:

 **FINAL LINK AUDIO** Pty Ltd

Distributors of Quality Audio Products

Final Link Audio Pty Ltd
Phone +61 3 9746 0394
Facsimile +61 3 9747 3063
Email info@finalink.com.au
Internet www.finalink.com.au

Pictures shown are for illustration purposes only. Specifications may change without notice. Information quoted in this catalogue is correct at the time of printing. However as part of our on going research and development programs improvements and small specification changes may result.

Authorised Dealer:



Artwork by zanatta.com.au